

Whatever happens in a watershed—and it can be miles away—can affect the lake, stream, or river.

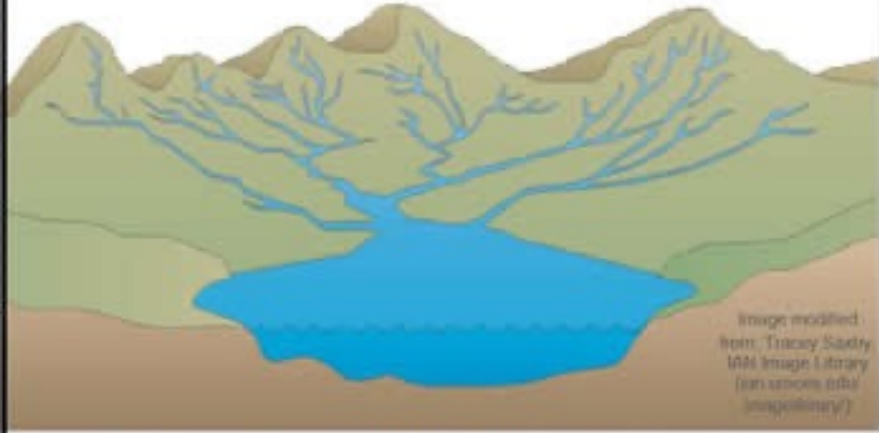


Image modified from Tracy Sastry 104 Image Library (an online educational repository)

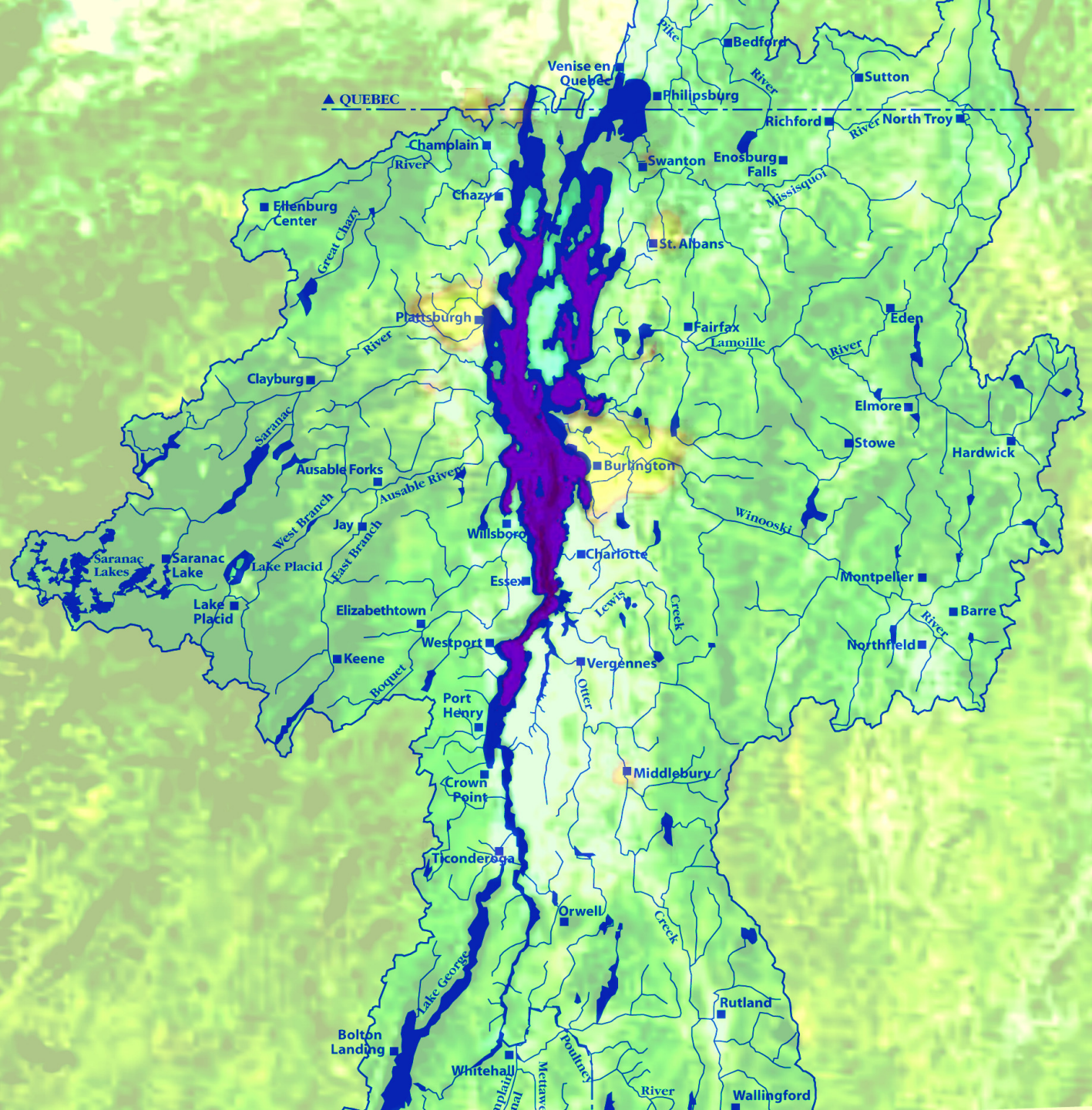
Watershed—the area that drains into a lake, stream, or river via streams or ditches, directly over the ground surface, or through the ground.

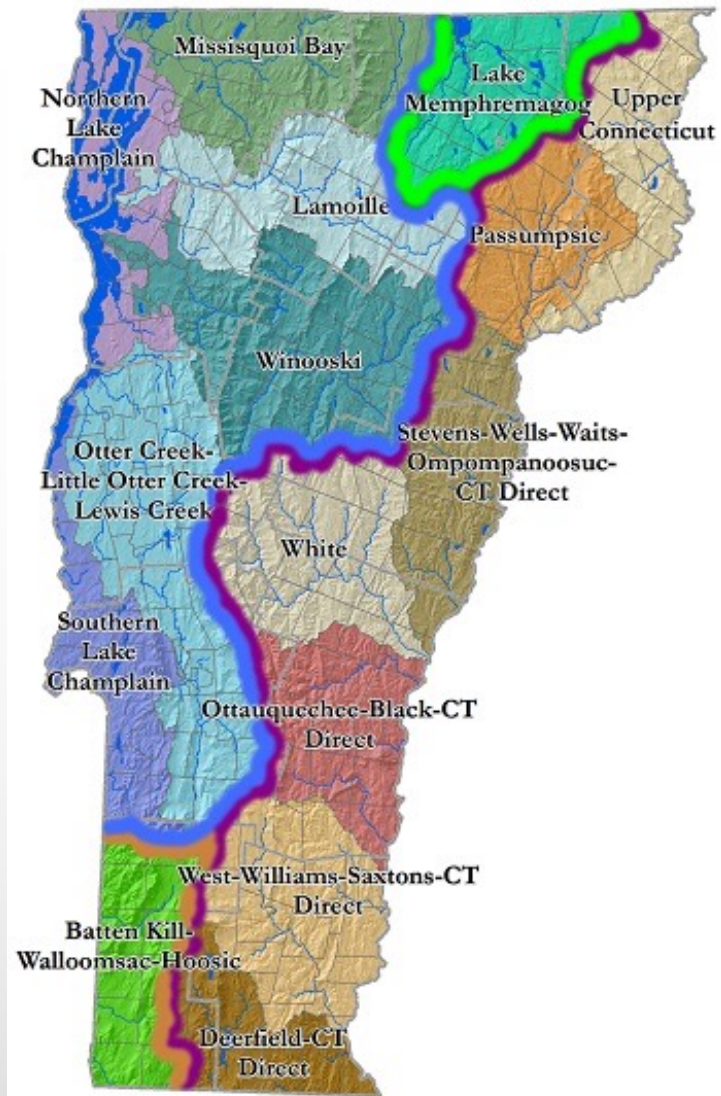


WHAT IS A WATERSHED?

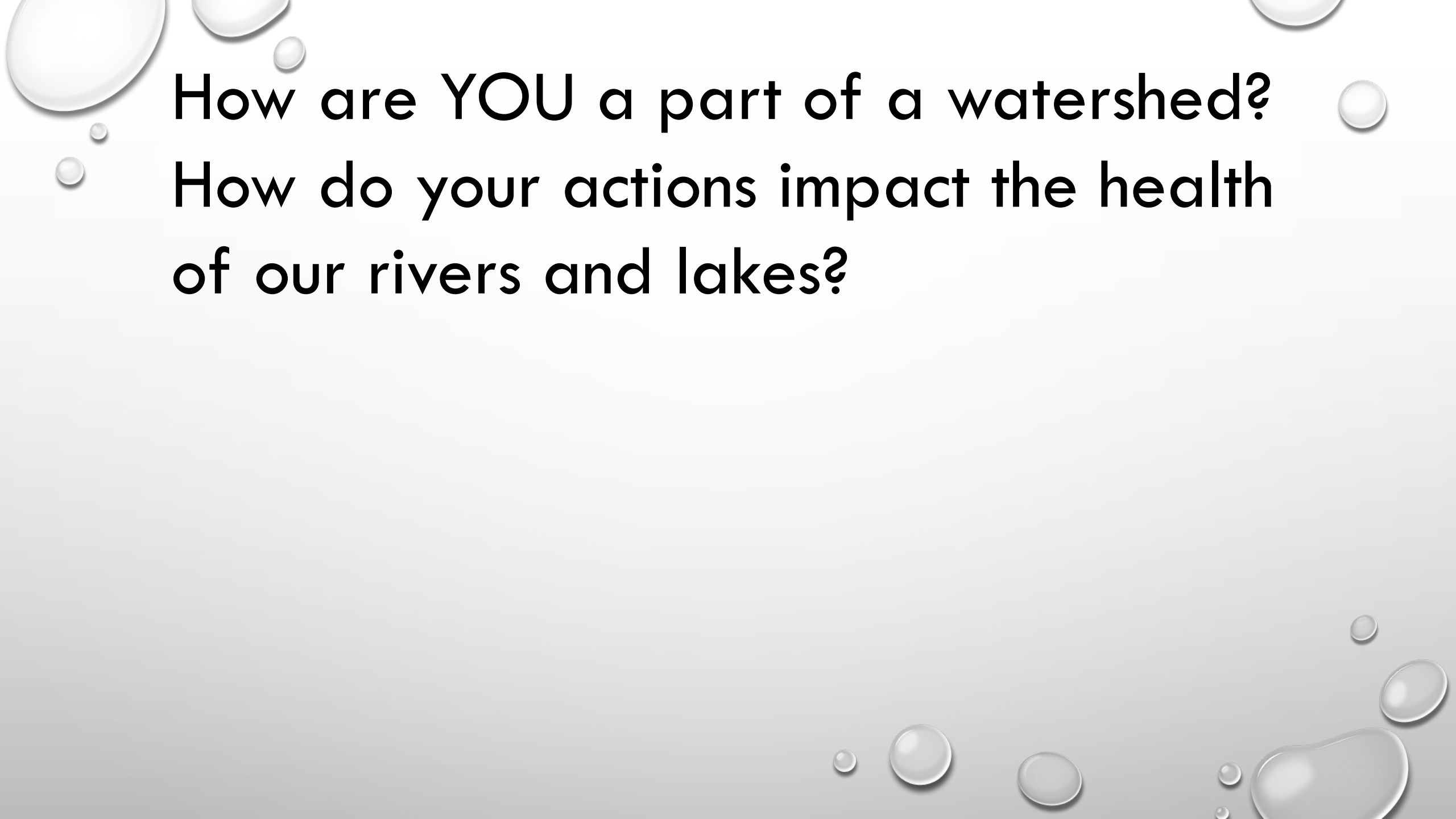
The Making of a River







- Hudson River Drainage Basin
- Lake Champlain Drainage Basin
- Connecticut River Drainage Basin
- Lake Memphremagog Drainage Basin

The background features several realistic water droplets of various sizes, some with highlights and shadows, scattered across the page. The largest droplets are in the top-left and bottom-right corners, while smaller ones are interspersed throughout.

How are YOU a part of a watershed?
How do your actions impact the health
of our rivers and lakes?

Meandering Stream Channel

